



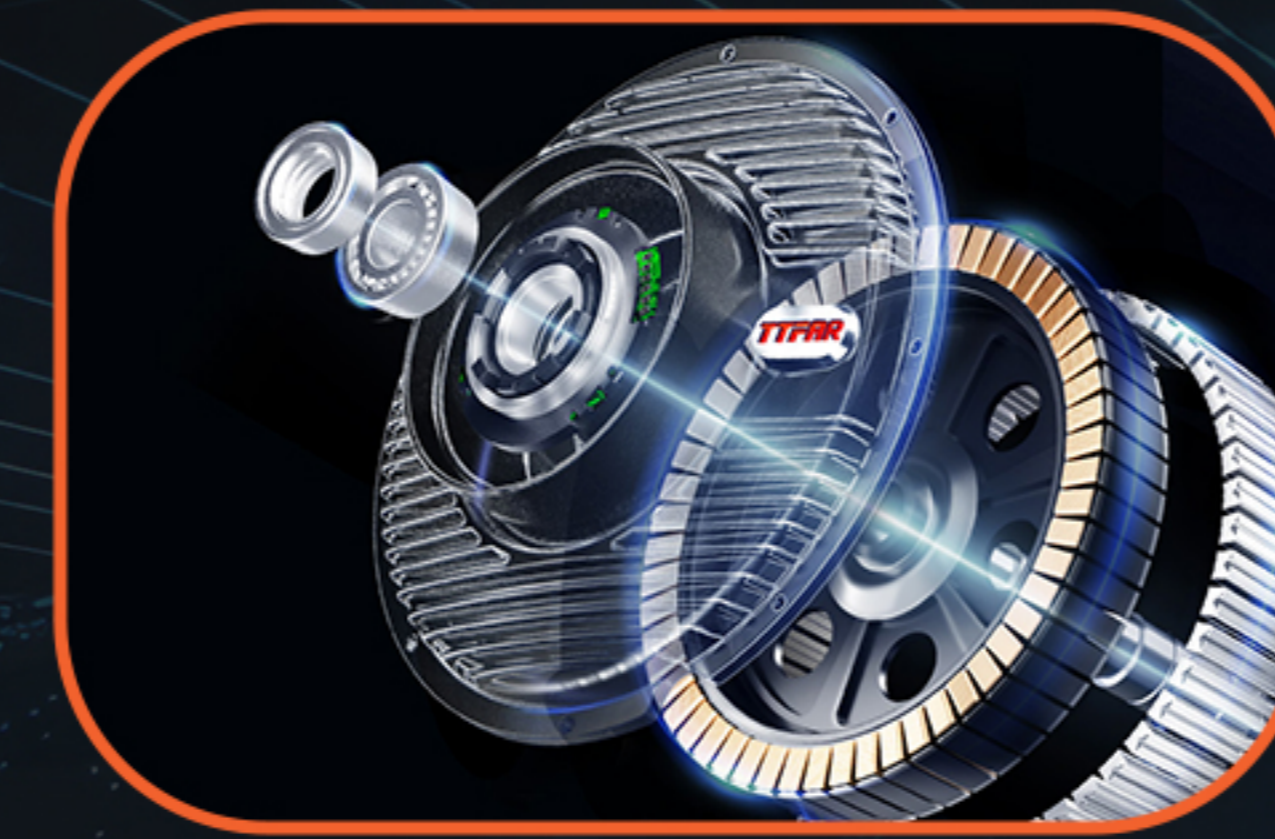
E8S PRO

E8S PRO



MOTOR

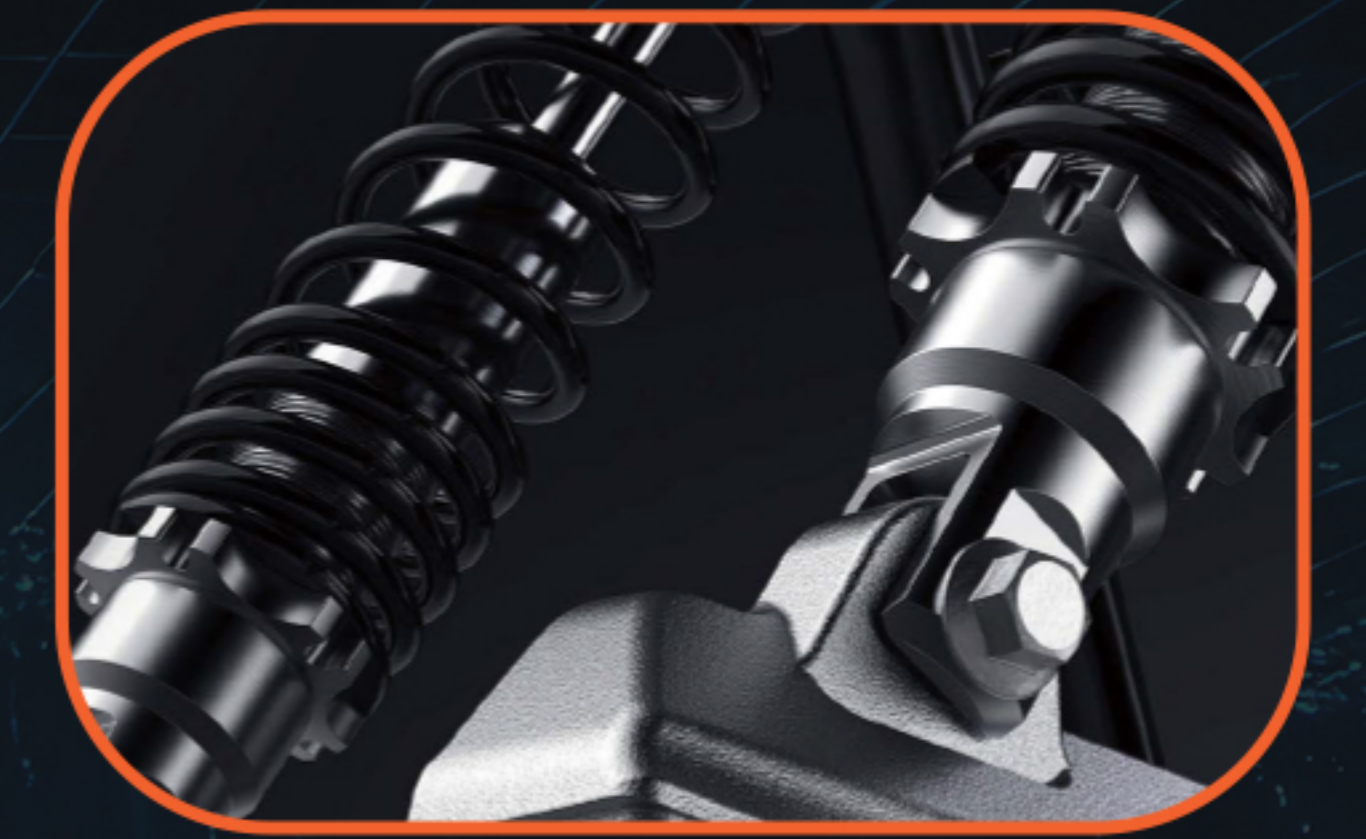
Motor Type	TTFAR Motor - 2,000W DC Brushless Hub Motor Peak Power 3,000W
Rated Power	2,000W
Maximum Torque	149Nm
Maximum Speed	60km/h
Controller	Energy Retrieving Controller



TTFAR SELF-DEVELOPED MOTOR



FRONT AND REAR DISC BRAKE



HYDRAULIC SHOCK ABSORPTION

TIRES & BRAKES

Wheel	12 inch, Aluminium Wheel
Tire Size	90/80-12
Shock Absorption	Hydraulic
Front Brake	Disc
Rear Brake	Disc



SMART COLOURFUL DASHBOARD



THREE LENS LED HEADLIGHT



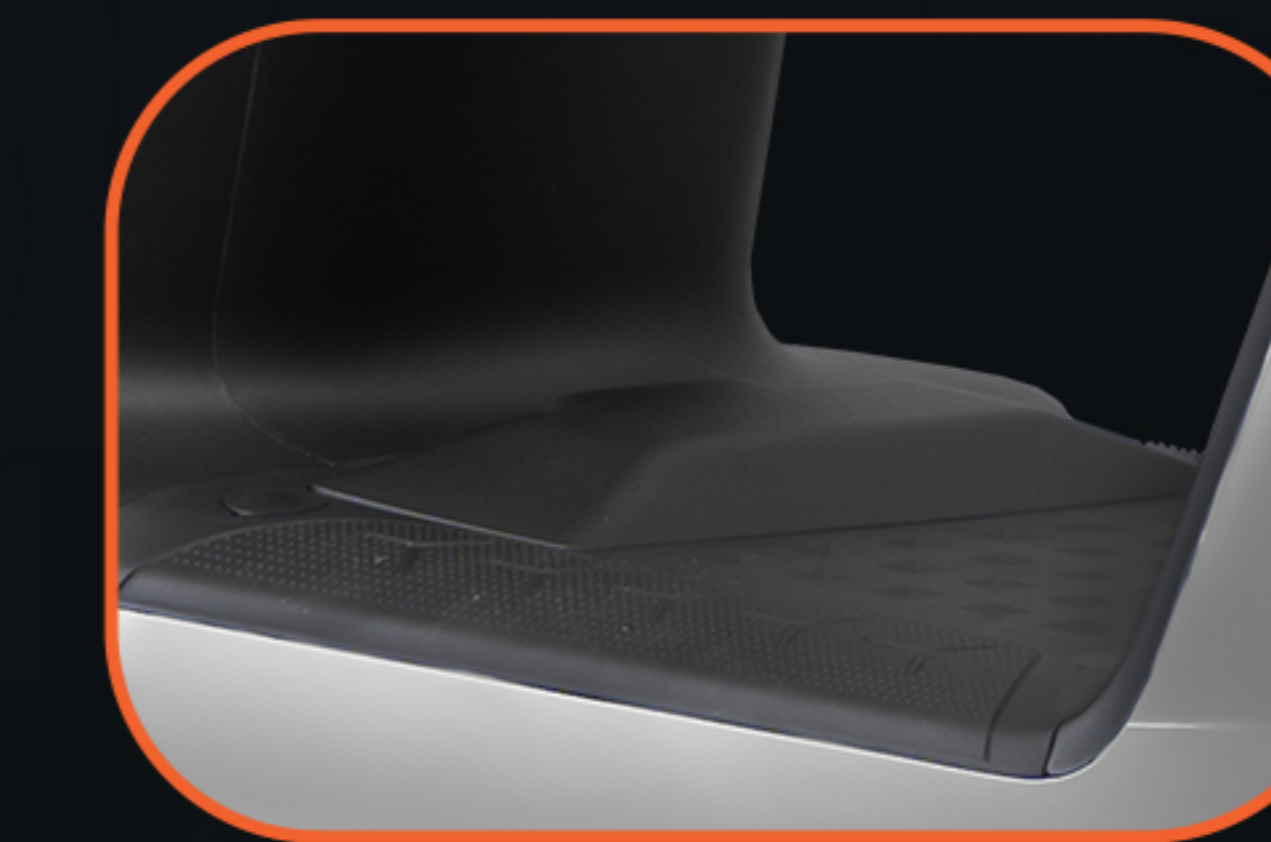
ICONIC TAIL LIGHT

BODY DIMENSION

Overall Length (mm)	1,870
Overall Width (mm)	760
Overall Height (mm)	1,155
Wheelbase (mm)	1,300
Ground Clearance (mm)	110



32-LITER AMPLE STORAGE SPACE



COMFORTABLE PEDAL SPACE - 360MM



GRAVITY SENSING SEAT

ELECTRICALS

Battery Type	Graphene Battery
Battery Capacity	38Ah
Battery Voltage	72V
Meter	LED Digital Colour Instrument
Headlight	Three Lens LED Headlight



Black



Matte Sea Blue



Space Gray

Distributed by



MFORCE BIKE HOLDINGS SDN. BHD.(751410-H)

1485, Jalan Seruling, Kawasan Perindustrian Valdor, 14200 Sungai Jawi, Pulau Pinang, Malaysia.
Tel: 604-545 2222 | Fax: 604-545 2288 | Email: help@mforce.my